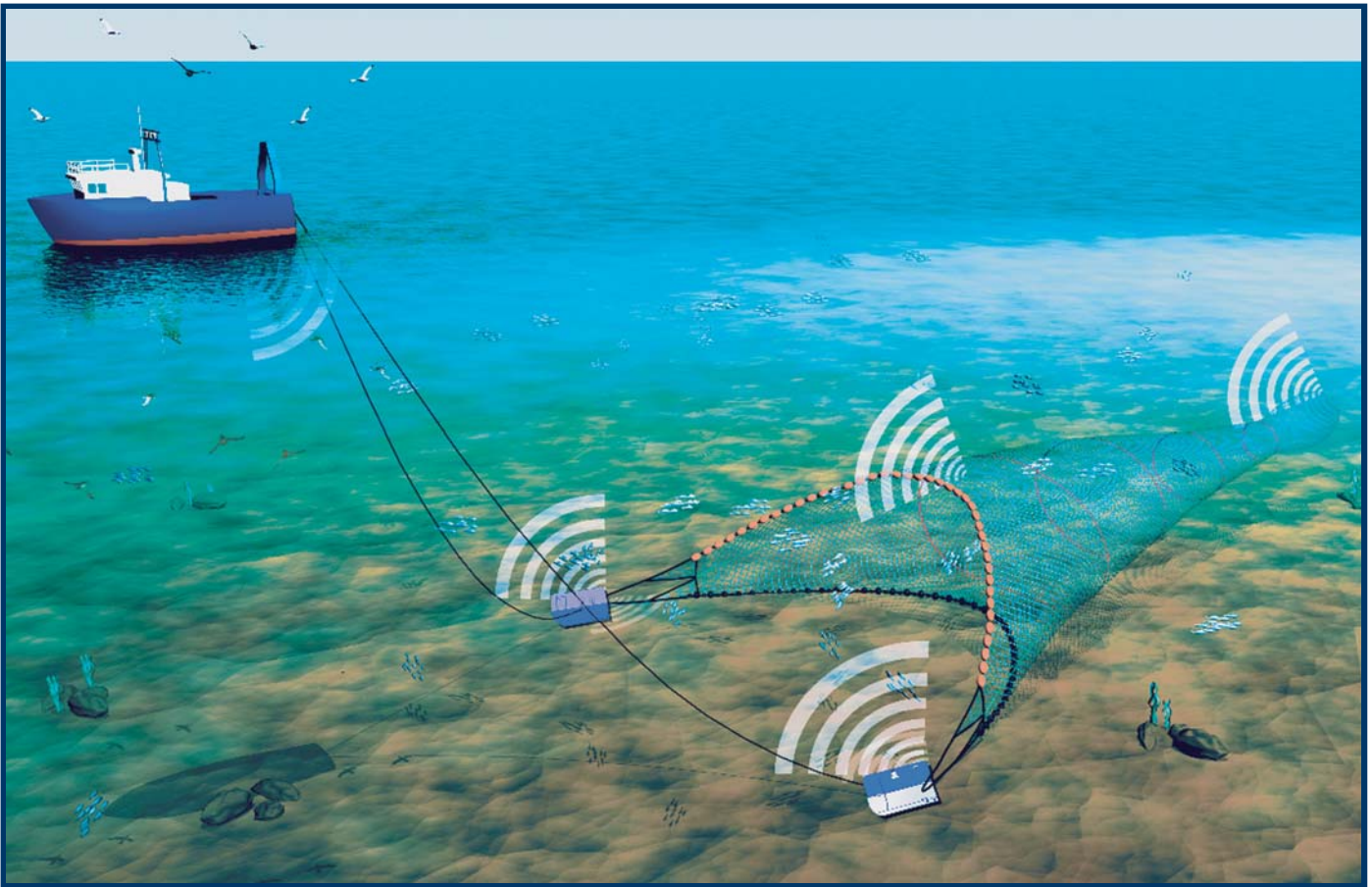




NOTUS

SECURITY FROM KNOWING NOT GUESSING

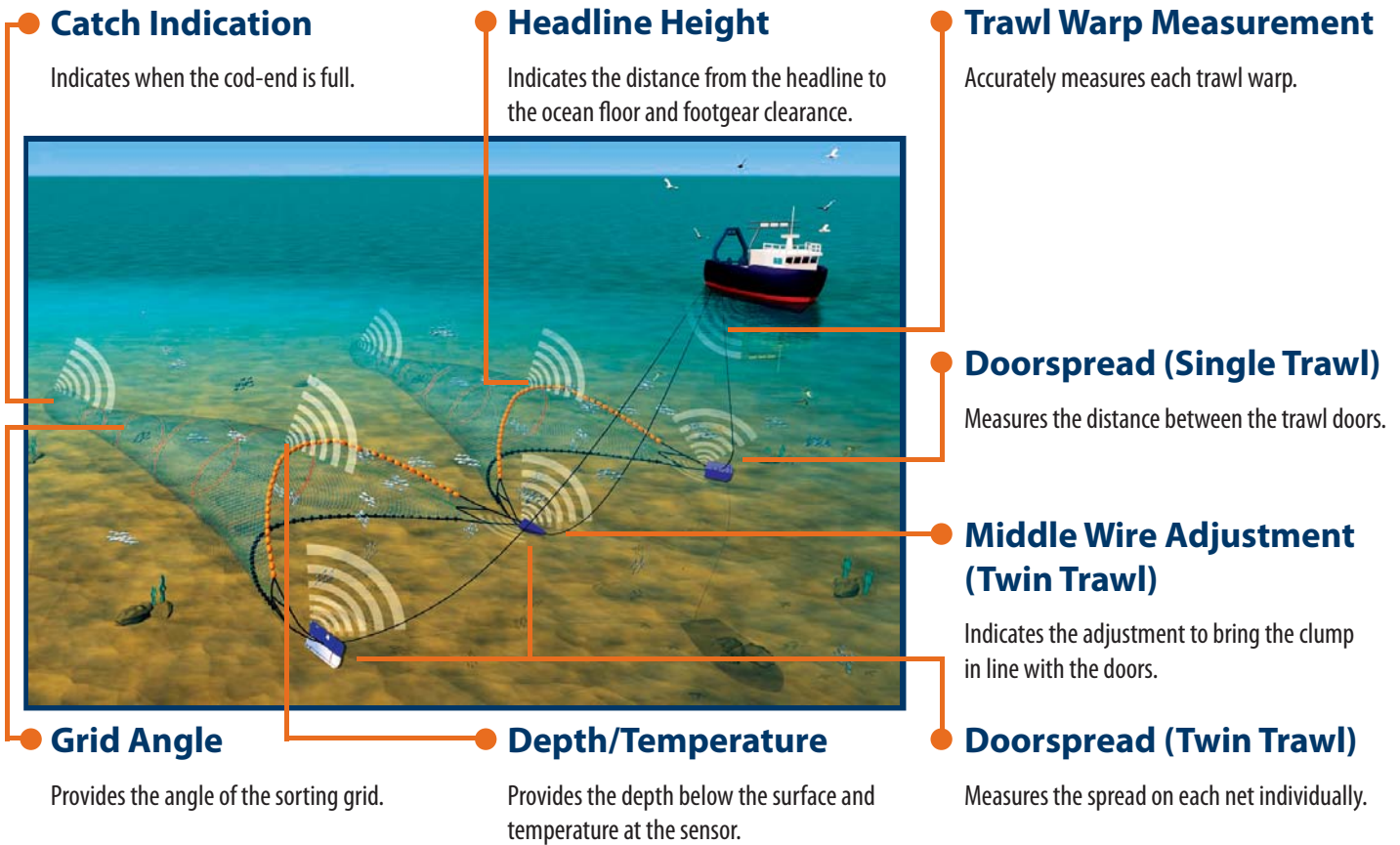


TRAWLMASTER

Wireless Trawl Monitoring System

Complete Gear Geometry for Single and Twin Rigs

The system of choice for some of the world's most advanced fisheries.



The Trawlmaster wireless net monitoring system provides the most important parameters of the trawl which allows you to fish more efficiently. Robust sensors that use the most up-to-date technology are attached to the trawl and a PC displays a 3D representation of the gear. The system can be used on any trawl - single trawls, twin trawls, other multi rigs and pair trawls.



NOTUS

SECURITY FROM KNOWING NOT GUESSING

Testimonials



Miss Jacqueline IV

"We cut down the RPM's by 150 revs a tow."



Fear Not

"Notus measures my wires and indicates when we are mudding up."



Copious LK

"Small adjustments to the middle wire calculated by Notus has immediate benefits."



Lynden II

"The Notus has helped our fishing immensely."



Ocean Challenge

"I would not leave the harbour without the Trawlmaster."



Miss Trish II

"I'm catching more with Notus because I know my gear is right all the time."



Amethyst

"We are delighted with its performance."



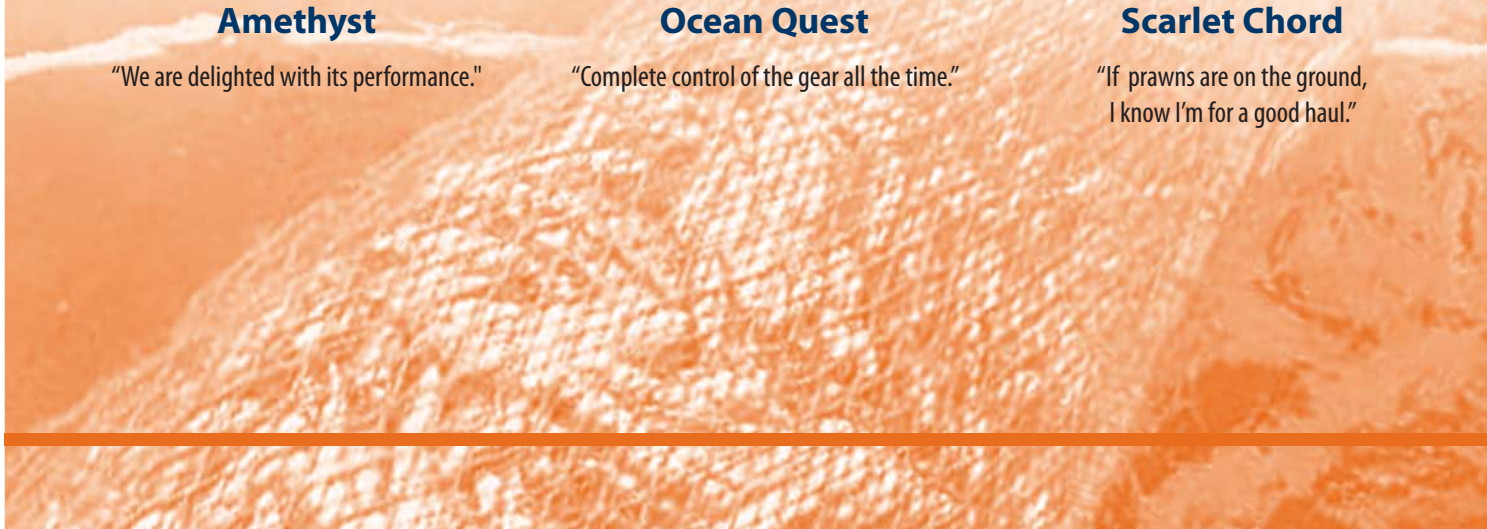
Ocean Quest

"Complete control of the gear all the time."



Scarlet Chord

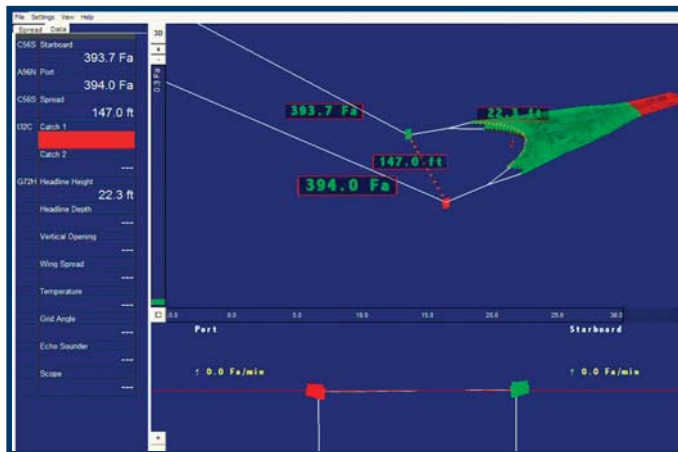
"If prawns are on the ground, I know I'm for a good haul."



Single Trawl

Omnidirectional

Acoustic beams are 360° ensuring a good acoustic link when the trawl is off to one side and when the doors are not in line.



Optimal Trawl Geometry

Increase catch in strong current by towing by doorspread NOT speed.

The system accurately measures the trawl warps so you do not have to. Spend your time fishing instead of on the pier, measuring warps.

Indicates trawl warp adjustment in cross current to square the doors.

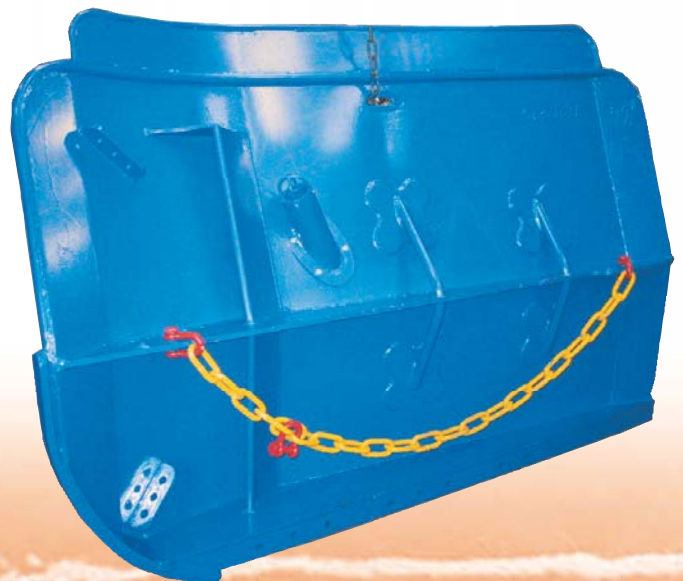
Spread and headline sensors ensure that the trawl is always the optimal shape.

Save Fuel

Changes in doorspread instantly indicate if back stops break, if a large rock has entered the trawl or if the nets are mudding up (i.e. digging too far in the sea bottom).

Save fuel by reducing RPMs. It is easy to tow too hard into a strong current. By slowing the vessel and fishing according to spread, you reduce fuel consumption.

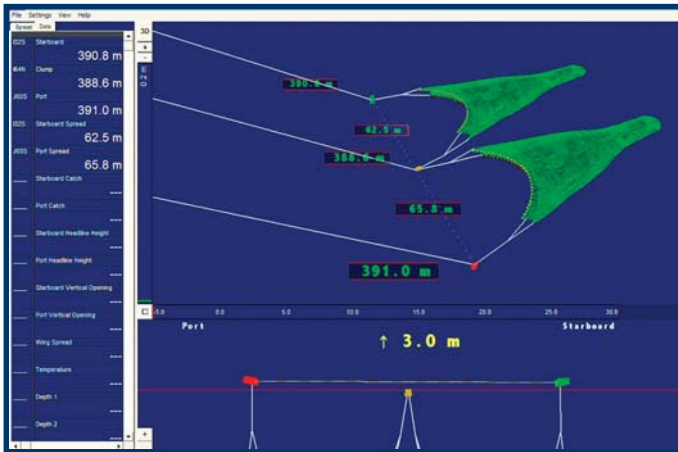
Monitoring spread and height allows you to keep the proper warp out. Shooting too much warp increases drag and makes the doors unstable. Too little warp causes the gear to come off bottom and lose spread.



Twin Trawl

Coded Transponding Sensors

Ensures no interference and gives the captain total control from the wheelhouse.



Optimal Trawl Geometry

By indicating the spread on EACH trawl you can watch each net individually. Catch equal bulk in each trawl by achieving the same spread on both nets.

An accurate middle wire adjustment is calculated to align the clump and doors. If the clump is behind the doors the trawl will underspread and cause meshing. Placing the clump ahead of the doors causes the doors to overspread.

The system accurately measures the trawl wires so you do not have to. Spend your time fishing instead of on the pier, measuring wires.

Save Fuel

Changes in doorspread instantly indicate if back stops break, if a large rock has entered the trawl or if the nets are mudding up (i.e. digging too far in the sea bottom).

Save fuel by reducing RPMs. It is easy to tow too hard into a strong current. By slowing the vessel and fishing according to spread, you reduce fuel consumption.

