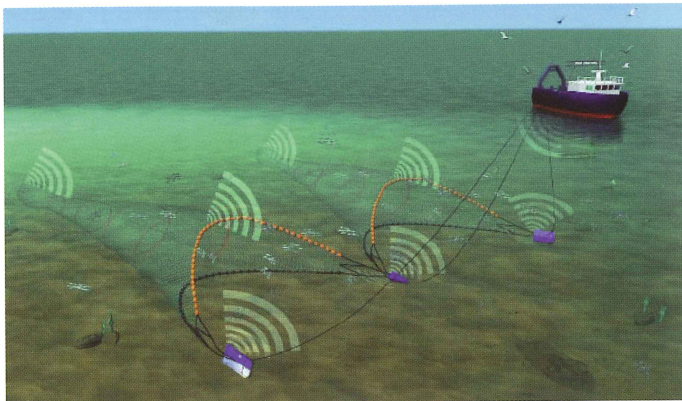


Notus Trawlmaster net monitoring system



For 10 years, Electronic Navigation Ltd have been the local agents – for sales and servicing – for Trawlmaster net monitoring system from Notus of Canada. Dave James of ENL says: “The Notus Trawlmaster is well-suited for Kiwis who use single-rig and twin-rig trawling.”

The system has been fitted on a number of vessels around New Zealand with great results, improving quality and saving fuel. The Trawlmaster system has a range of sensors. For single trawling, Notus offers catch, headline height, door spread and warp-measuring sensors. This warp measurement is a major advantage this system has over other alternatives.

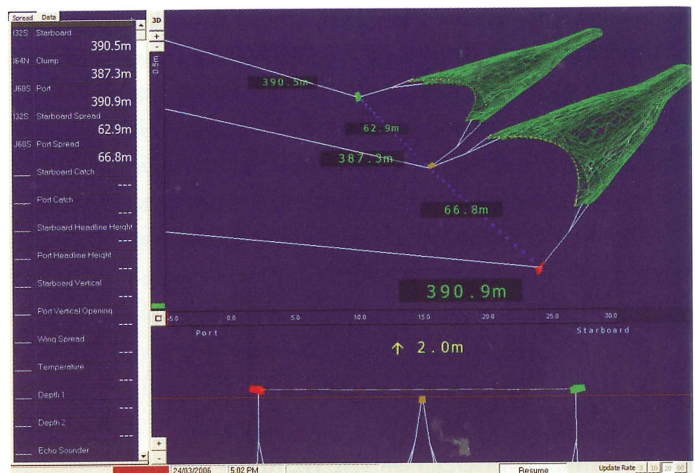
The system can also be used on twin trawls deployed from an outrigger system. The main measurements in this setup are doorspread on EACH trawl and alignment of the doors. Significant fuel savings have been achieved by fishing vessels using twin trawls from outriggers with a Notus system in New Zealand, Australia, Madagascar and Holland. When twin trawling using a third warp Notus has a suite of sensors that monitor catch, headline height, or warp measurement, plus the ‘double distance’ or door-clump-door sensors.

Only one paravane or hull-mounted transducer is required because the acoustic beams are omni-directional, i.e. 360° and a unique coding system prevents interference from other systems. The PC based 3D bridge display provides a clear representation of the geometry of the trawl.

Dave says “One of the benefits of Trawlmaster is that by using the distance sensors, skippers can square up the doors despite what their warp counters or tension meters tell them. Keeping the gear square will reduce damage and the gear will fish better. If it fishes better then that’s less time on the ground and that means less fuel catching what you have.

“Skippers would often tow for a set time, or determine from marks when to haul but without really knowing if what they were seeing was in fact fish and haul without knowing if there was anything in the cod end at all. Now they fish to the catch sensor saving time, money and effort. Less time fishing, less time on the ground means less fuel and a reduced impact on the environment; and that’s got to be good.

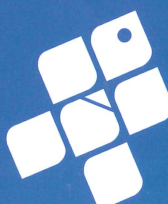
“There has been a reluctance for NZ fishermen to grasp an



opportunity. They see it advertised in papers and magazines but it’s often not until someone else they know starts using it do they follow suit” Dave added.

“Trawlmaster has been doing extremely well in the UK. If they can use it and swear by it there’s no reason why Kiwi’s can’t.” *Chris Carey*
 Contact: Electronic Navigation Ltd, 78 Vickerman Street, Nelson 7010.
 Tel: +64 (0)3 548-4987

www.enl.co.nz



FISHSAFE

It's About You

FishSAFE Workshops
 for the inshore and aquaculture sectors ... see the
 FishSAFE website or contact
 your local mentor.

**Working for safety
in the fishing industry**

For more information on how to access
ACC 10%
 levy discounts
 go to www.fishsafe.org.nz